

Report No. 10: Week ending 11 July 2021

Overview: The 2021 influenza season so far

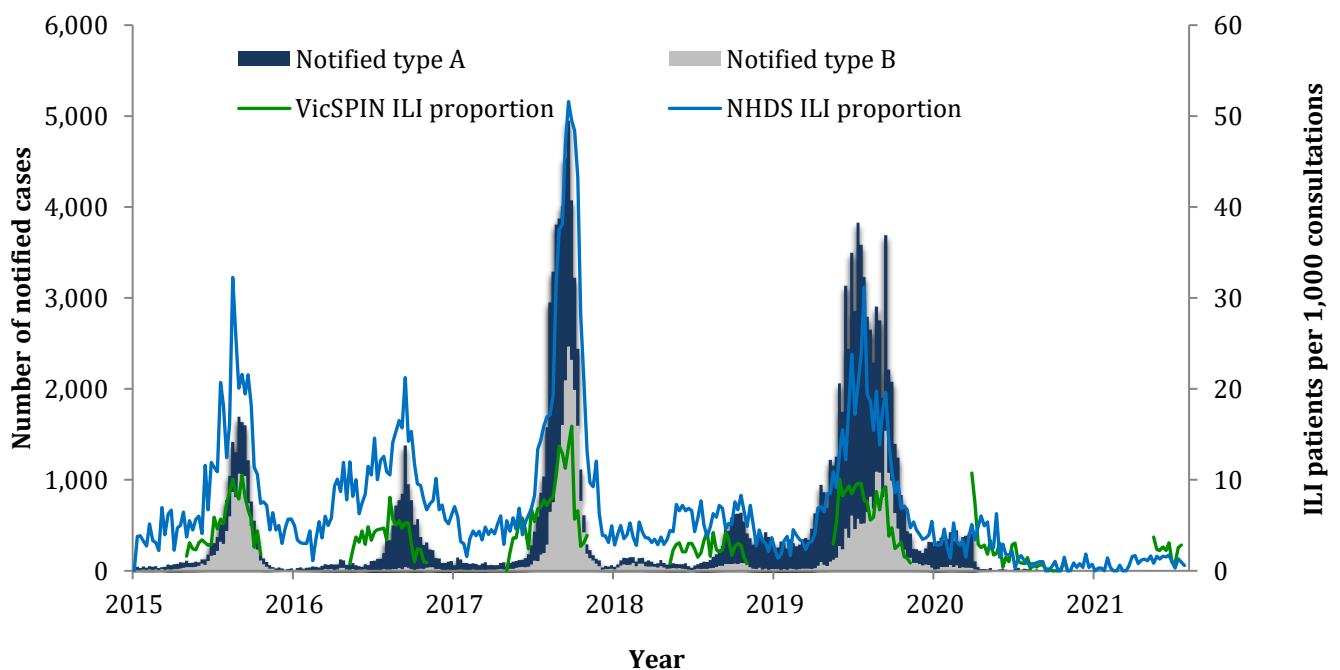
Influenza-like illness (ILI) is **below the average activity** threshold for this reporting week, with **2.8 ILIs per 1000 patients seen**.

The number of notified cases of laboratory confirmed influenza is **99% lower** than the number notified by the same time in 2020. The majority of notified cases have been **type A (84.5%)**. There have also been three cases of a co-infection with influenza type A and B, and two cases of influenza type C.

Four swabs were received from VicSPIN this week, of which zero tested positive for influenza.

Parainfluenza was detected in **one swab**.

Figure 1. Routinely notified influenza cases, VicSPIN and National Home Doctor Service (NHDS) ILI consultation proportions, Victoria, 2015 – 2021



National Home Doctor Service (Victoria)

- The ILI proportion for this week is **0.6 ILI cases per 1,000** patients seen (Figure 1).
- ILI activity is **well below** the average activity threshold range of 10-35 ILI cases per 1,000 patients seen.

Victorian Sentinel Practice Influenza Network

- The ILI proportion measured by VicSPIN for this week, is below the average activity threshold with **2.8 ILI cases per 1,000 patients seen**. (Figures 1 & 2, and Table 1).
- **Four swabs** were received from VicSPIN this week (Figure 3 and Table 1).
- There were zero **swabs** that tested positive for influenza. (Figure 3 and Table 1).
- Parainfluenza was detected in one swab (Figure 3).

Table 1. Summary of reporting from general practice sentinel sites, week ending 11 July 2021.*

	Week	Year-to-date
Number (%) of general practitioners reporting	30 (100%)#	
Total patients seen	2,466	24,834
Total patients with ILI	7	59
Consultation rate for ILI (per 1,000 patients)	2.8	2.4
Number of specimens received	4	30
Number (%) positive for influenza	0 (0%)	1 (3.3%)

* These numbers are subject to change as data is updated and processed.

One GP has left the clinic.

Figure 2. VicSPIN ILI consultation proportions, Victoria, 2017, 2018, 2019, 2020 and 2021

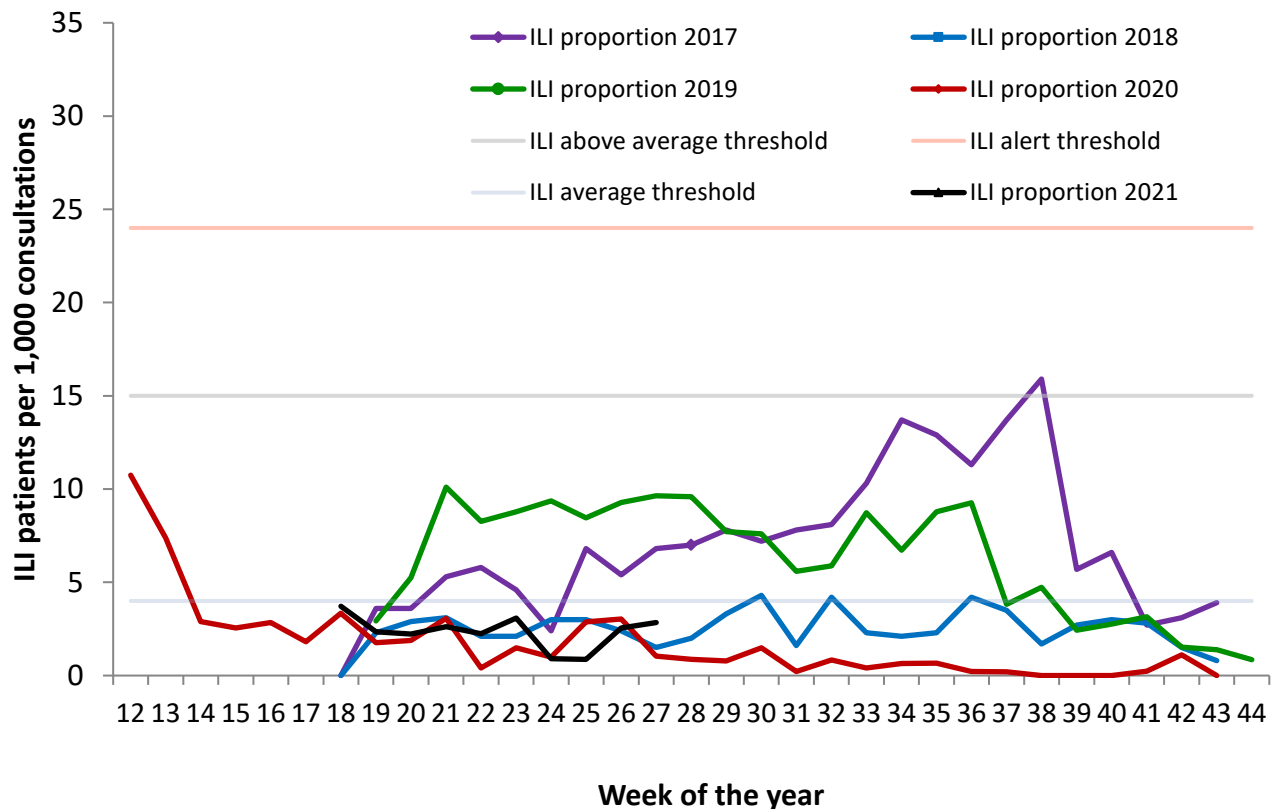
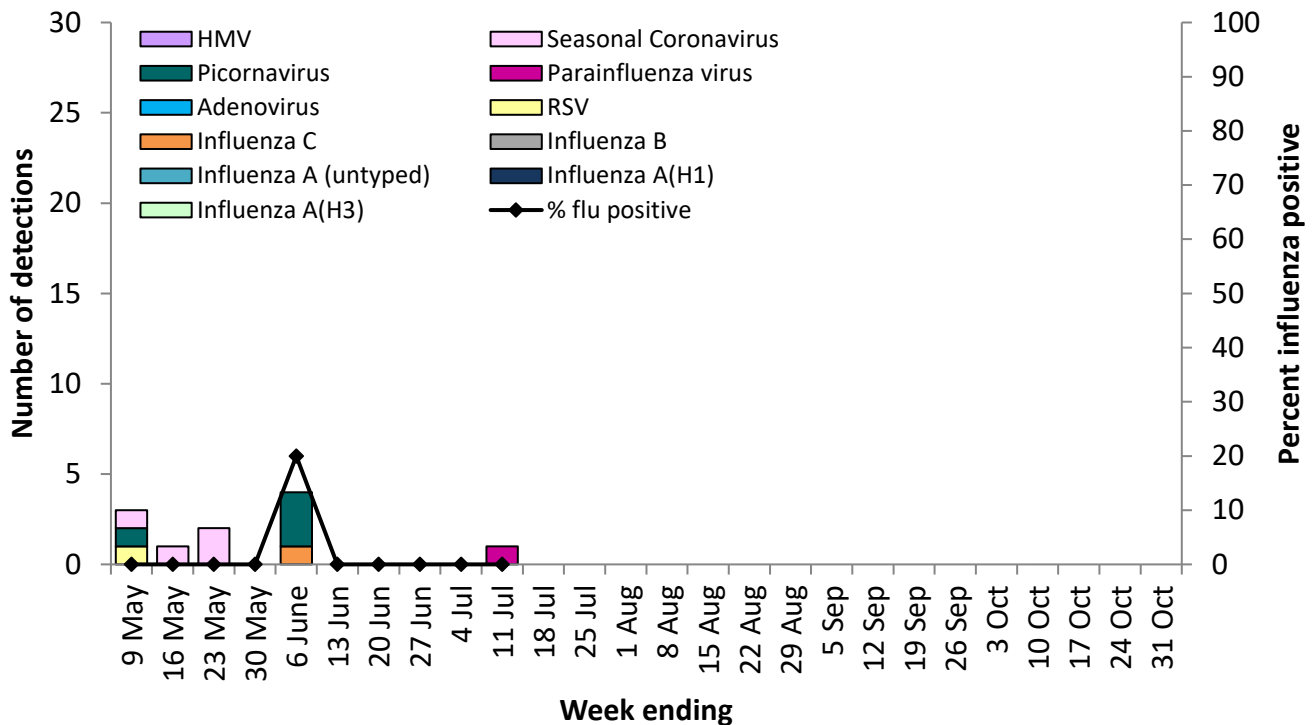


Figure 3. VicSPIN respiratory virus detections and percent influenza positive, Victoria, 2021



Observations from other influenza surveillance systems

Notified cases of laboratory confirmed influenza

- The number of notified cases of laboratory confirmed influenza for this week, is 3 cases.
- A total of 71 cases of laboratory confirmed influenza have been processed so far in 2021, a 99% decrease on the number notified by the same time in 2020 (Figure 1).
- Year to date, 84.5% of notified cases have been type A (20% of Type A cases are aged less than 10 years and 20% aged 65 years and over) and 8.5% have been type B (100% of Type B cases are aged between 10 and 65 years).
- There have been two notified case of influenza type C and three notified cases of co-infection with influenza type A and B.

World Health Organization Collaborating Centre for Reference and Research on Influenza

- The strains included in the 2021 egg-based influenza quadrivalent vaccine are: A/Victoria/2570/2019 (H1N1)pdm09-like virus, A/Hong Kong/2671/2019 (H3N2)-like virus, B/Washington/02/2019-like (B/Victoria lineage) and B/Phuket/3073/2013-like (B/Yamagata lineage) virus. The trivalent vaccine excludes the B/Yamagata lineage virus.
- The strains included in the 2021 cell-based influenza quadrivalent vaccine are: A/Wisconsin/588/2019 (H1N1)pdm09-like virus, A/Hong Kong/2671/2019 (H3N2)-like virus, B/Washington/02/2019-like (B/Victoria lineage) and B/Phuket/3073/2013-like (B/Yamagata lineage) virus.

- A total of 0 Victorian isolates have been strain-typed by the WHO to date:
 - 0 as A/Victoria/2570/2019-Like
 - 0 as A/Victoria/2570/2019-Low Reactor
 - 0 as A/Darwin/726/2019-Like
 - 0 as A/Darwin/726/2019-Low Reactor
 - 0 as B/Washington/02/2019-Like
 - 0 as B/Washington/02/2019-Low Reactor
 - 0 as B/Phuket/3073/2013-Like
 - 0 as B/Phuket/3073/2013-Low Reactor

N.B. A/Darwin/726/2019 is the cell equivalent of A/Hong Kong/2671/2019-H3N2 vaccine strain.

- No isolates have shown resistance to zanamivir or oseltamivir, among the 9 Australian isolates tested so far in 2021.