

## Report No. 25: Week ending 27 October 2019

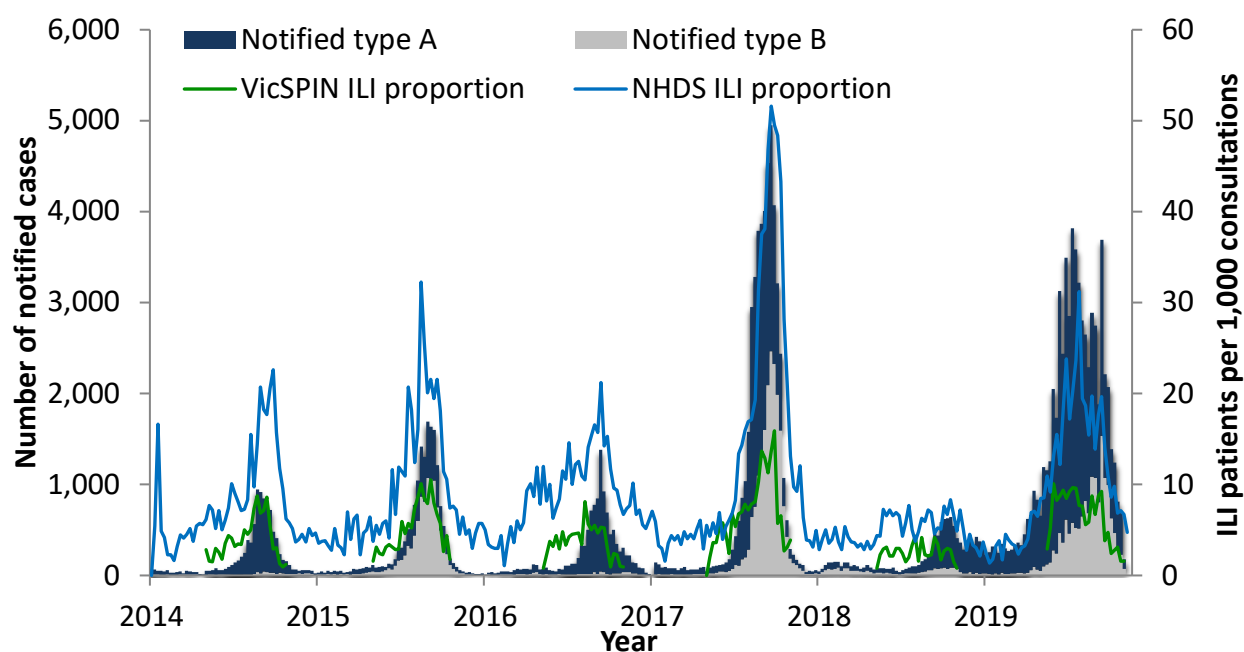
### Overview: The 2019 influenza season so far

Influenza-like illness (ILI) continues to be **below the average** threshold this week. The total ILI proportion measured by VicSPIN this week is slightly higher than at the same time in 2018 but lower than at the same time in 2017.

The number of notified cases of laboratory confirmed influenza is **almost eight times higher** than by the same time in 2018 **and almost 1.5 times higher** than in 2017. The majority of notified cases over the season have been **type A (76%)**, and **type A cases are older than type B** cases. However, the ratio of type A to B has shifted, with **type A decreasing to 64%** of notifications in the last 4 weeks, and **type B comprising 36%**.

**Three swabs** were received from VicSPIN this week, of which **33% (1 swab) were positive** for influenza. The average for the season is 32%. To date, influenza A(H3) was co-detected with A(H1N1)pdm09 in one case. In eight additional cases, influenza was co-detected with another respiratory virus.

*Figure 1. Routinely notified influenza cases and VicSPIN and National Home Doctor Service (NHDS) ILI consultation proportions, Victoria, 2014-2019*



### National Home Doctor Service (Victoria)

- The ILI proportion for the week has decreased from 6.7 to 4.7 ILI cases per 1,000 patients seen (Figure 1).
- ILI activity continues to be **below** the average activity threshold range of 10-35 ILI cases per 1,000 patients seen.

## Victorian Sentinel Practice Influenza Network

- The ILI proportion measured by VicSPIN is slightly higher than at the same time in 2018, but lower than at the same time in 2017. The proportion is below the ILI average threshold, with 1.54 ILI cases per 1,000 patients seen. (Figures 1 & 2).
- Three swabs were received this week, of which 1 (33%) was positive for influenza (one A(H3)). Picornavirus was detected in one additional swab (Figure 3).

Table 1. Summary of reporting from general practice sentinel sites, week ending 27 October 2019

|  | Week     | Year-to-date |
|--|----------|--------------|
| Number (%) of general practitioners reporting  | 78 (93%) |              |
| Total patients seen                            | 5188     | 148,381      |
| Total patients with ILI                        | 8        | 971          |
| Consultation rate for ILI (per 1,000 patients) | 1.54     | 6.5          |
| Number of specimens received                   | 3        | 693          |
| Number (%) positive for influenza              | 1 (33%)  | 223 (32%)    |

Figure 2. VicSPIN ILI consultation proportions, Victoria, 2017, 2018 and 2019

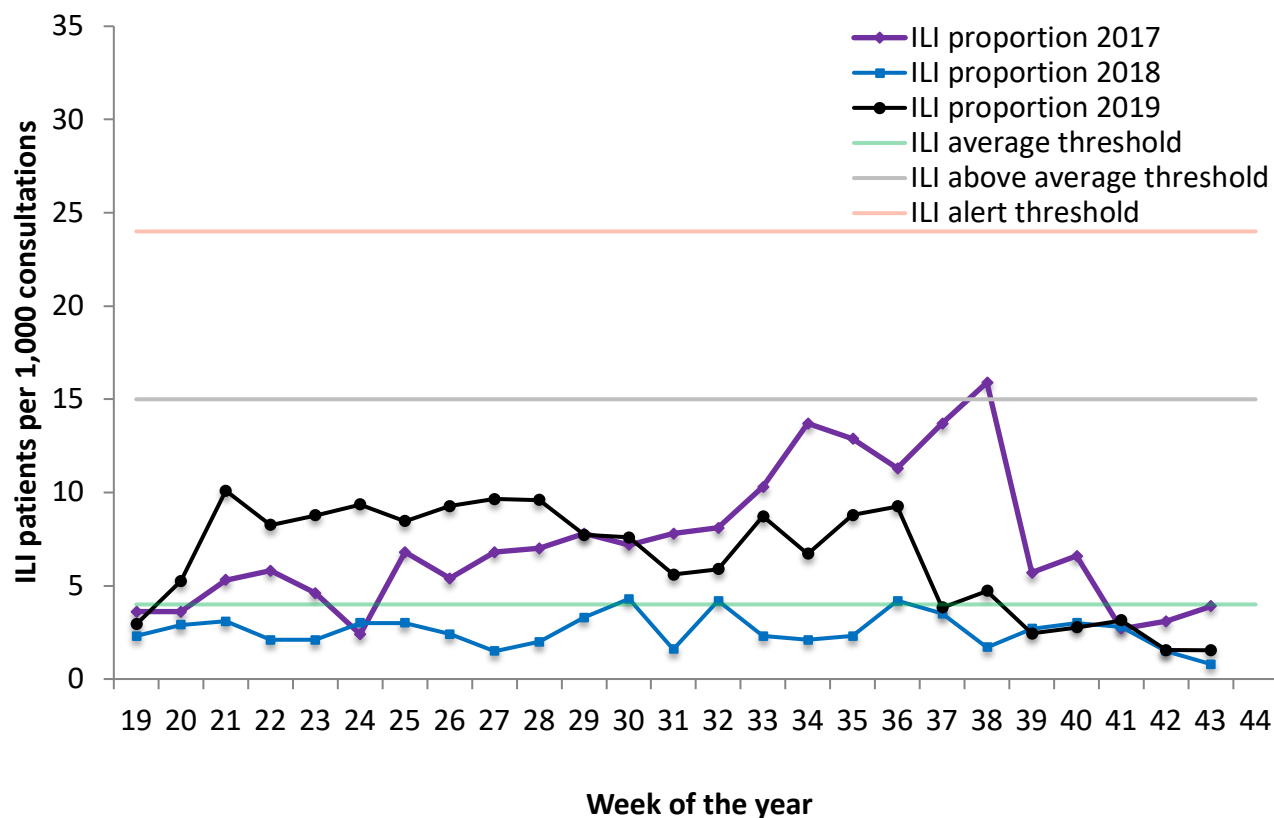
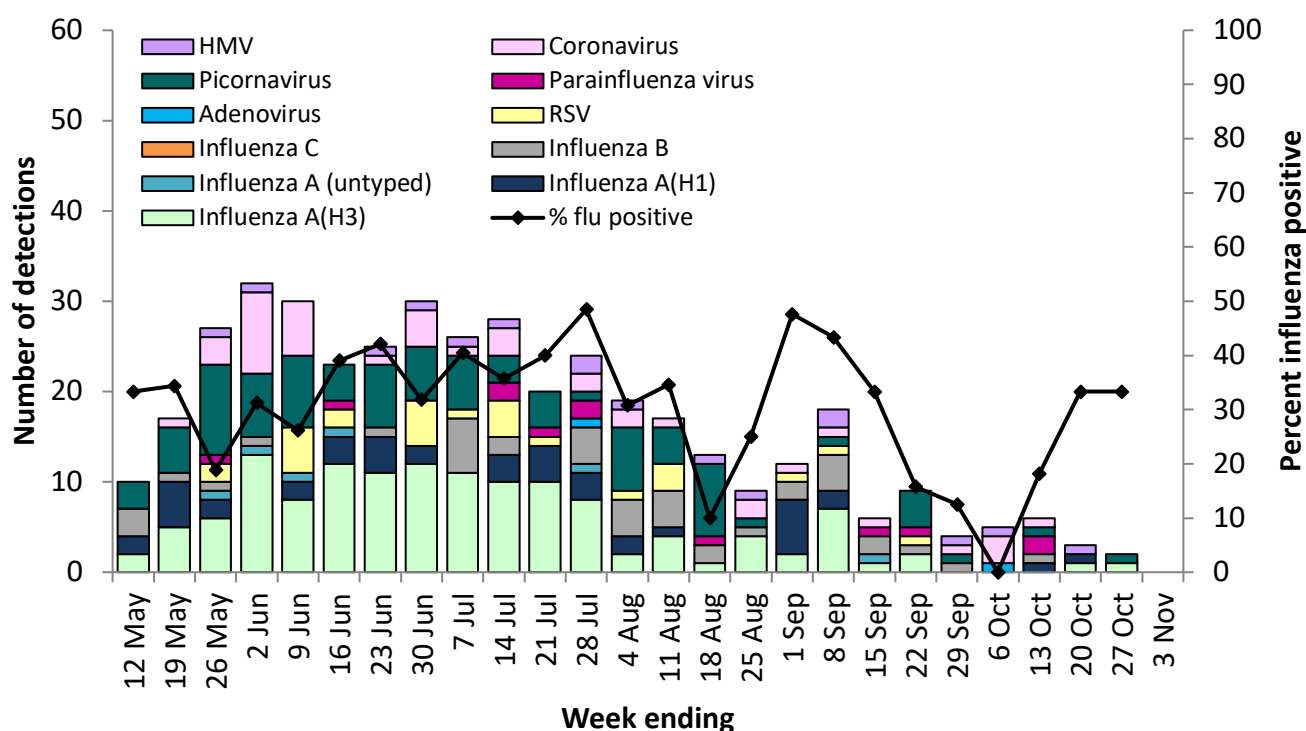


Figure 3. VicSPIN respiratory virus detections and percent influenza positive, Victoria, 2019



## Observations from other influenza surveillance systems

### Notified cases of laboratory confirmed influenza

- A total of 65,240 cases of laboratory confirmed influenza have been processed so far in 2019, almost eight times the number of cases notified by the same time in 2018 and almost one and a half times the number by the same time in 2017 (Figure 1). This number is subject to change as notifications are processed and entered.
- Year to date, 76% of notified cases have been type A (20% aged less than 10 years and 18% aged 65 years and over) and 24% have been type B (32% aged less than 10 years and 4% aged 65 years and over). However, there has been a shift in the ratio of type A to B, with 64% type A and 36% type B in the last 4 weeks.

### World Health Organization Collaborating Centre for Reference and Research on Influenza

- The strains included in the 2019 quadrivalent influenza vaccine are: A/Michigan/45/2015-Like (H1N1)pdm09 virus; A/Switzerland/8060/2017-like (H3N2) virus; B/Colorado/06/2017-like virus with the quadrivalent vaccine including B/Phuket/3073/2013-like virus as well.
- A total of 353 Victorian isolates have been strain-typed by the WHO to date: 158 as A/Michigan/45/2015-Like; two as A/Michigan/45/2015-Low Reactor; 106 as A/Switzerland/8060/2017-Like; 54 as A/Switzerland/8060/2017-Low Reactor; 23 as B/Colorado/6/2017-Like; nine as B/Colorado/6/2017-Low Reactor; and one as B/Phuket/3073/2013-Like.
- One isolate has shown resistance to oseltamivir and one isolate has shown resistance to zanamivir, among the 2290 Australian isolates tested so far in 2019.