

## Report No. 22: Week ending 6 October 2019

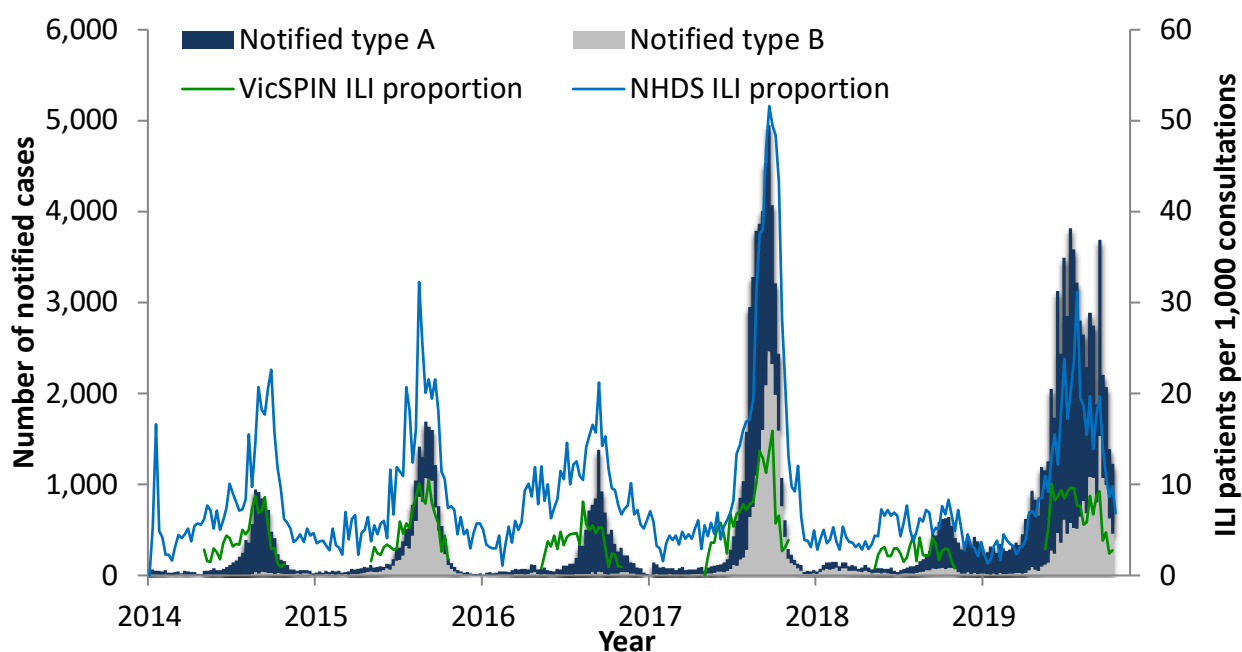
### Overview: The 2019 influenza season so far

Influenza-like illness (ILI) is **well below the average** threshold this week. The total ILI proportion measured by VicSPIN this week is similar to last week and similar to the same time in 2018, but lower than for the same time in 2017.

The number of notified cases of laboratory confirmed influenza is **over nine times higher** than by the same time in 2018 **and almost 1.5 times higher** than in 2017. The majority of notified cases over the season have been **type A (77%)**, and **type A cases are older than type B** cases. However, the ratio of type A to B has shifted, with **type A decreasing to 54%** of notifications in the last 4 weeks, and **type B comprising 46%**.

**Nine swabs** were received from VicSPIN this week, of which **0% (0 swabs) were positive** for influenza. The average for the season is 33%. To date, influenza A(H3) was co-detected with A(H1N1)pdm09 in one case. In eight additional cases, influenza was co-detected with another respiratory virus.

*Figure 1. Routinely notified influenza cases and VicSPIN and National Home Doctor Service (NHDS) ILI consultation proportions, Victoria, 2014-2019*



### National Home Doctor Service (Victoria)

- The ILI proportion for the week decreased from 9.8 to 6.85 ILI cases per 1,000 patients seen (Figure 1).
- ILI activity continues to be **below** the average activity threshold range of 10-35 ILI cases per 1,000 patients seen.

## Victorian Sentinel Practice Influenza Network

- The ILI proportion measured by VicSPIN is lower than at the same time in 2017 and similar to the proportion at the same time in 2018. The proportion is well below the ILI average threshold, with 2.8 ILI cases per 1,000 patients seen. (Figures 1 & 2).
- Nine swabs were received this week, of which 0 (0%) was positive for influenza. H1N1 and adenovirus were detected in one swab each and coronavirus was detected in three additional swabs. (Figure 3).

Table 1. Summary of reporting from general practice sentinel sites, week ending 6 October 2019

	Week	Year-to-date
Number (%) of general practitioners reporting	84 (100%)	
Total patients seen	5434	131,965
Total patients with ILI	15	937
Consultation rate for ILI (per 1,000 patients)	2.76	7.1
Number of specimens received	9	672
Number (%) positive for influenza	0 (0%)	218 (32%)

Figure 2. VicSPIN ILI consultation proportions, Victoria, 2017, 2018 and 2019

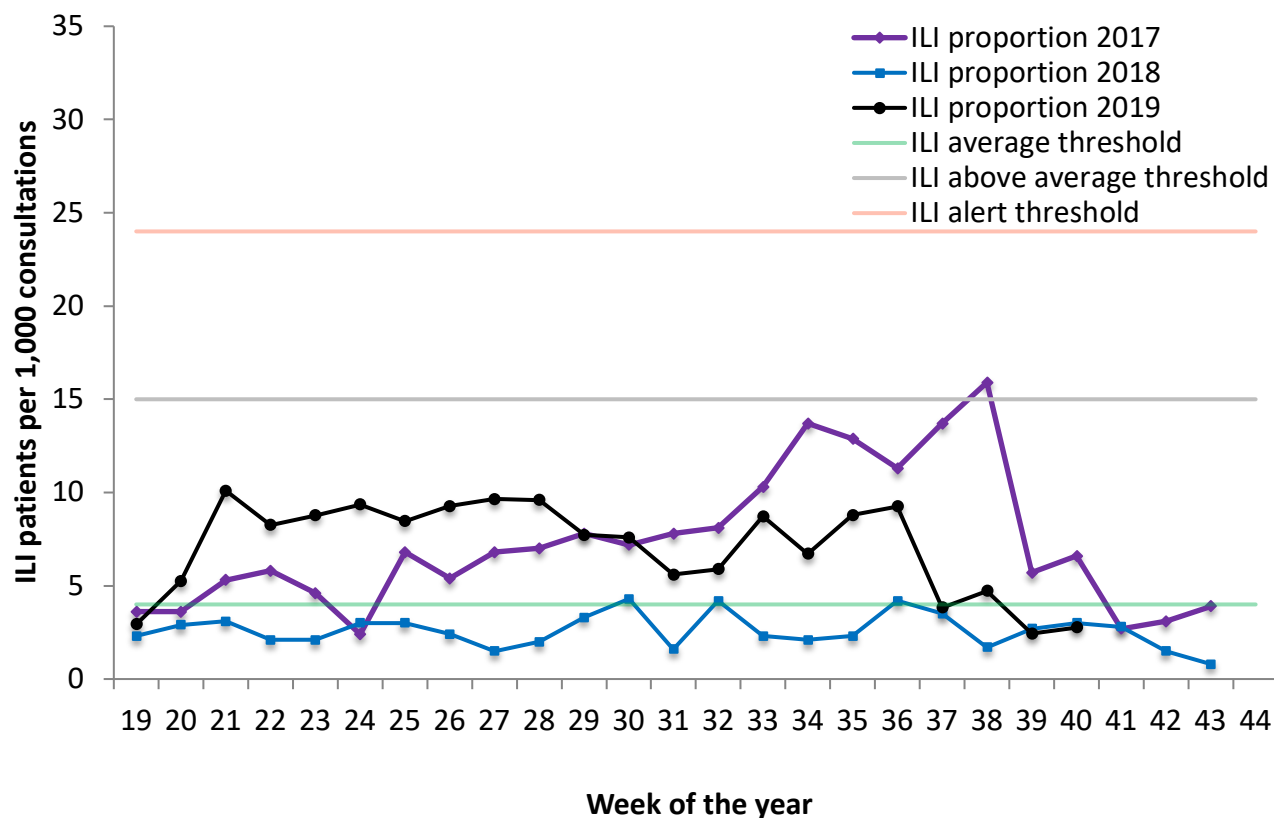
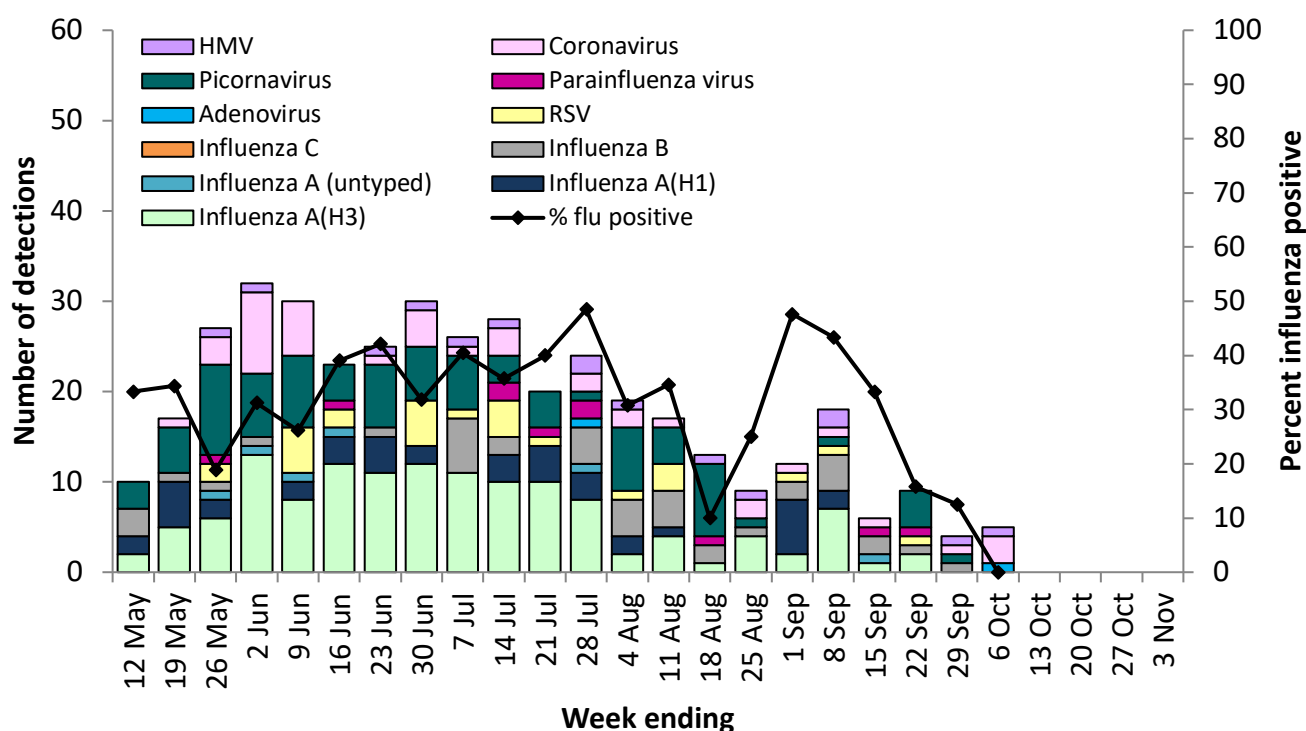


Figure 3. VicSPIN respiratory virus detections and percent influenza positive, Victoria, 2019



## Observations from other influenza surveillance systems

### Notified cases of laboratory confirmed influenza

- A total of 63,600 cases of laboratory confirmed influenza have been processed so far in 2019, over nine times the number of cases notified by the same time in 2018 and almost one and a half times the number by the same time in 2017 (Figure 1). This number is subject to change as notifications are processed and entered.
- Year to date, 77% of notified cases have been type A (20% aged less than 10 years and 18% aged 65 years and over) and 23% have been type B (32% aged less than 10 years and 4% aged 65 years and over). However, there has been a shift in the ratio of type A to B, with 54% type A and 46% type B in the last 4 weeks.

### World Health Organization Collaborating Centre for Reference and Research on Influenza

- The strains included in the 2019 quadrivalent influenza vaccine are: A/Michigan/45/2015-Like (H1N1)pdm09 virus; A/Switzerland/8060/2017-like (H3N2) virus; B/Colorado/06/2017-like virus with the quadrivalent vaccine including B/Phuket/3073/2013-like virus as well.
- A total of 296 Victorian isolates have been strain-typed by the WHO to date: 129 as A/Michigan/45/2015-Like; two as A/Michigan/45/2015-Low Reactor; 105 as A/Switzerland/8060/2017-Like; 27 as A/Switzerland/8060/2017-Low Reactor; 23 as B/Colorado/6/2017-Like; nine as B/Colorado/6/2017-Low Reactor; and one as B/Phuket/3073/2013-Like.
- One isolate has shown resistance to oseltamivir and one isolate has shown resistance to zanamivir, among the 2231 Australian isolates tested so far in 2019.