

## Report No. 17: Week ending 1 September 2019

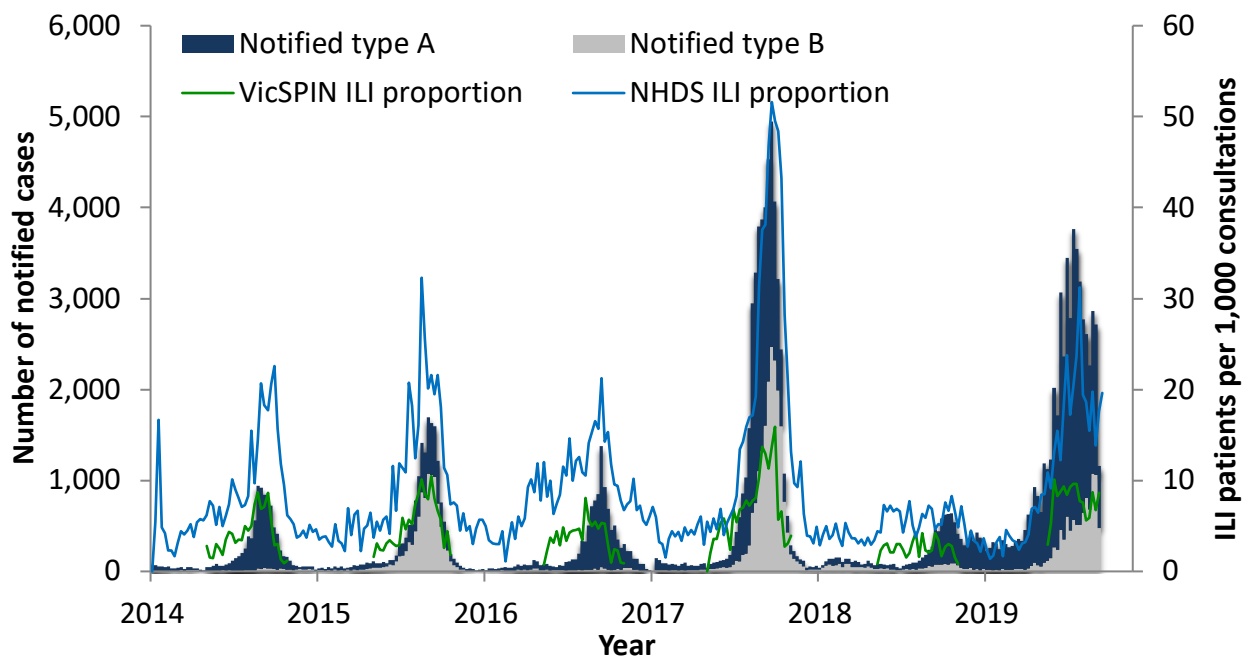
### Overview: The 2019 influenza season so far

Influenza-like illness (ILI) activity remains within the **average** threshold. The total ILI proportion measured by VicSPIN this week increased slightly and is similar to levels observed earlier in the season but lower than the same time in 2017.

The number of **notified cases of laboratory confirmed influenza is 13 times higher than by the same time in 2018 and 2 times higher than in 2017**. The majority of notified cases are **type A (81%)**, and type A cases are older than type B cases; 32% of type B cases are aged less than 10 years compared to 21% of type A cases, and 17% of type A cases are aged 65 years and older compared to 4% of type B cases.

**Twenty-one swabs were received** from VicSPIN this week, of which **48% were positive for influenza**. This is higher than the average for the season (34%). To date, influenza A(H3) was co-detected with A(H1N1)pdm09 in one case. In seven additional cases, influenza was co-detected with another respiratory virus.

*Figure 1. Routinely notified influenza cases and VicSPIN and National Home Doctor Service (NHDS) ILI consultation proportions, Victoria, 2014-2019*



### National Home Doctor Service (Victoria)

- The ILI proportion for the week increased slightly from 17.6 to 19.6 ILI cases per 1,000 patients seen (Figure 1).
- ILI activity remains within the average activity threshold range of 10-35 ILI cases per 1,000 patients seen.

## Victorian Sentinel Practice Influenza Network

- The ILI proportion measured by VicSPIN is higher than for the same time in 2018, but lower than in 2017. The proportion remains within the average activity level, with 8.6 ILI cases per 1,000 patients seen, which is slightly higher than that observed last week, but similar to the previous week. (Figures 1 & 2).
- Twenty-one swabs were received this week, of which 10 (48%) were positive for influenza (six of A(H1), one A(H3), one A(Hx) and two B). Coronavirus and RSV were detected in one swab each. (Figure 3).

Table 1. Summary of reporting from general practice sentinel sites, week ending 1 September 2019

|  | Week      | Year-to-date |
|--|-----------|--------------|
| Number (%) of general practitioners reporting  | 84 (100%) |              |
| Total patients seen                            | 5693      | 104,419      |
| Total patients with ILI                        | 49        | 807          |
| Consultation rate for ILI (per 1,000 patients) | 8.6       | 7.7          |
| Number of specimens received                   | 21        | 594          |
| Number (%) positive for influenza              | 10 (48%)  | 197 (33%)    |

Figure 2. VicSPIN ILI consultation proportions, Victoria, 2017, 2018 and 2019

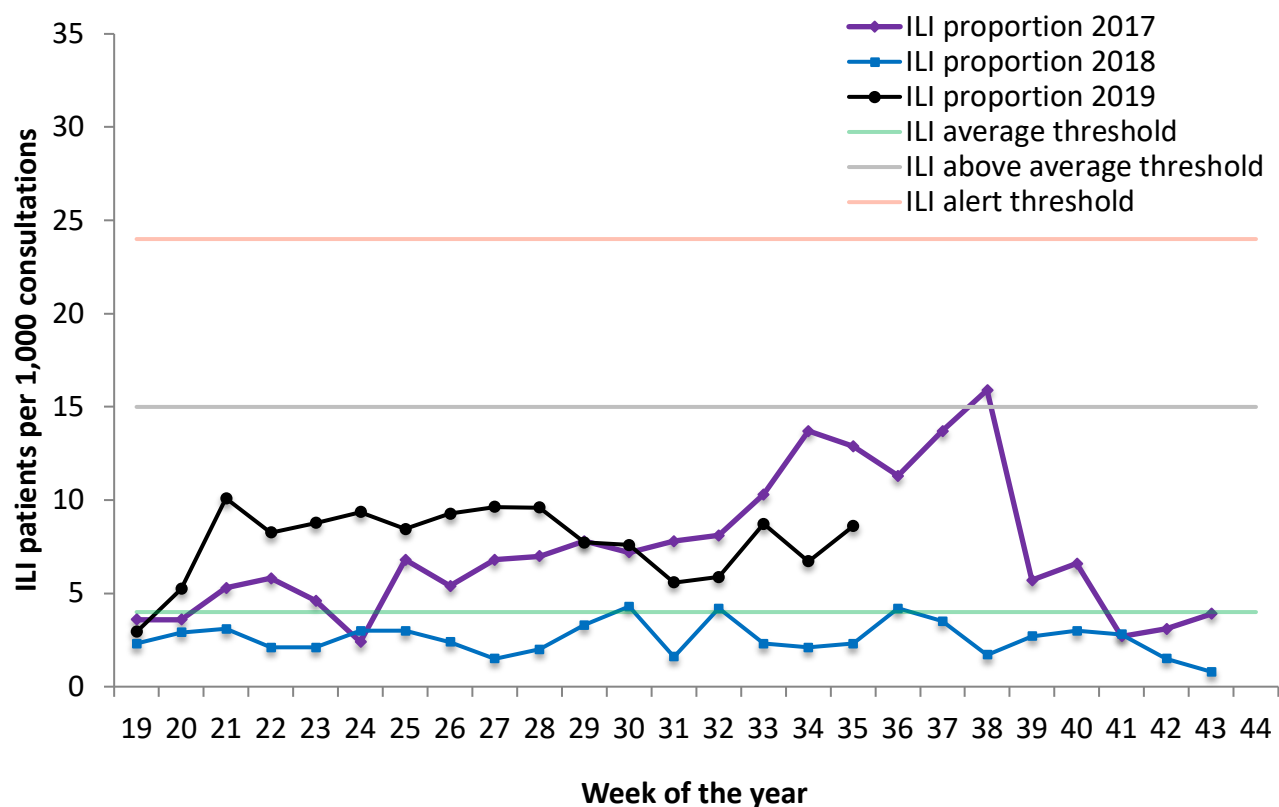
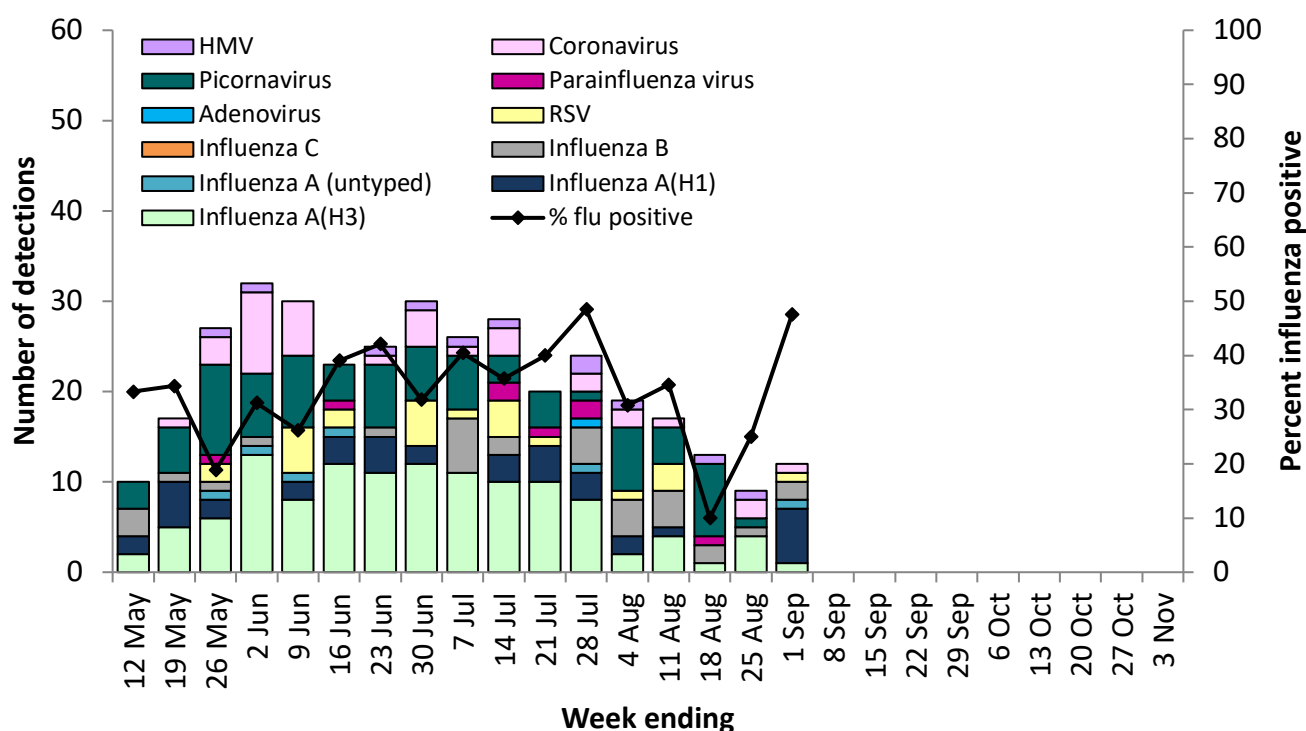


Figure 3. VicSPIN respiratory virus detections and percent influenza positive, Victoria, 2019



## Observations from other influenza surveillance systems

### Notified cases of laboratory confirmed influenza

- A total of 51,471 cases of laboratory confirmed influenza have been processed so far in 2019, thirteen times the number of cases notified by the same time in 2018 but only two times the number of cases notified by the same time in 2017 (Figure 1). This number is subject to change as notifications are processed and entered.
- Year to date, 81% of notified cases have been type A (21% aged less than 10 years and 17% aged 65 years and over) and 19% have been type B (32% aged less than 10 years and 4% aged 65 years and over).

### World Health Organization Collaborating Centre for Reference and Research on Influenza

- The strains included in the 2019 quadrivalent influenza vaccine are: A/Michigan/45/2015-Like (H1N1)pdm09 virus; A/Switzerland/8060/2017-like (H3N2) virus; B/Colorado/06/2017-like virus with the quadrivalent vaccine including B/Phuket/3073/2013-like virus as well.
- A total of 266 Victorian isolates have been strain-typed by the WHO to date: 125 as A/Michigan/45/2015-Like; two as A/Michigan/45/2015-Low Reactor; 89 as A/Switzerland/8060/2017-Like; 25 as A/Switzerland/8060/2017-Low Reactor; 16 as B/Colorado/6/2017-Like; eight as B/Colorado/6/2017-Low Reactor; and one as B/Phuket/3073/2013-Like.
- One isolate has shown resistance to oseltamivir and one isolate has shown resistance to zanamivir, among the 1898 Australian isolates tested so far in 2019.